

## 15\_06 Corridor Protection Map Preparation

### Question:

Are there any guidelines in place for Roadway to prepare Transportation Corridor Official Maps?

### Answer:

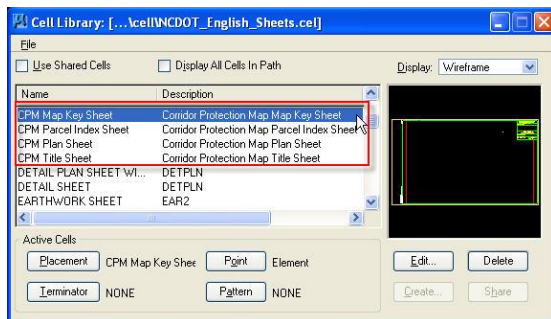
#### General Statutes

G.S. 136-44.50 Transportation Corridor Official Map Act states the following: " (2) A permanent certified copy of the transportation corridor official map or amendment has been filed with the register of deeds. The boundaries may be defined by map or by written description, or a combination thereof. The copy shall measure approximately **20 inches by 12 inches**, including no less than one and one-half inches binding space on the left-hand side. "

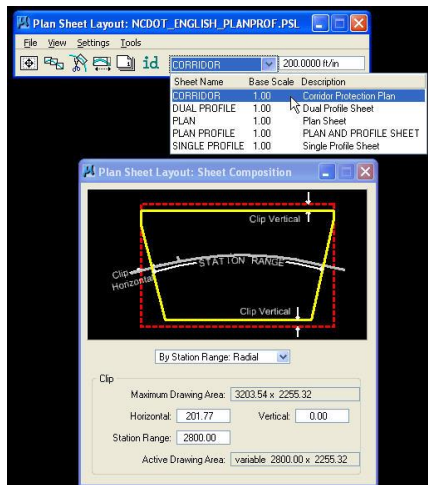
#### CADD Setup

Four new plan sheet cells has been added to the NCDOT sheet library for Corridor Protection Map preparation.

- CPM Map Key Sheet
- CPM Parcel Index Sheet
- CPM Plan Sheet
- CPM Title Sheet



In addition, the Geopak Plan Sheet Layout tool has been preset to automatically layout the Corridor Protection sheets. Depending on the size and scope of your Project, our standard recommendation is to use a scale of 1"=200' for Corridor Protection Maps with approximately 2800' stations per sheet.



## **Plotting and Distribution**

Before starting a Corridor Protection Map, notify Stephanie and David in the plot room so that they can check to see if this special size paper is in stock for the initial printed set. Also notify Reproduction in advance so that they will have enough on hand for mass distribution.

For printing of the first set here in Roadway, connect to printer "RD-Oce860-12" on the dot-ccpp01 server. Call the plot room before submitting to this queue because they will have to change out the roll for this special size paper.

After acquiring the proper signature for your Corridor Protection Map, for mass distribution and filing with the Register of Deed, submit the plans to Reproduction. Do not print these distribution sets here in the plot room.